



# RIDGEWOOD HIGH SCHOOL

2017-2018

County: BERGEN  
 District: RIDGEWOOD VILLAGE  
 Principal: DR. GORMAN  
 627 EAST RIDGEWOOD AVE  
 RIDGEWOOD, NJ 07451  
<https://www.ridgewood.k12.nj.us/>  
 (201)670-2800

Total students: **1,740**

- Economically Disadvantaged: **2.0%**
- Students with Disabilities: **11.5%**
- English Learners: **1.4%**
- Grades offered: **09-12**
- Student to Teacher Ratio: **13:1**
- Teacher Average Experience (years): **11.9**

## School Highlights Reported by the District

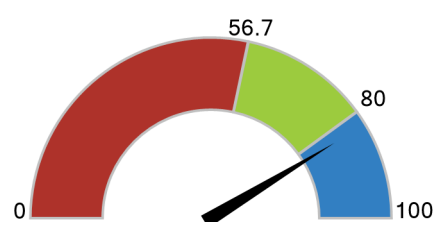
- Ridgewood High School is consistently recognized as one of the top performing high schools in the state.
- Highly trained professional staff is able to meet the needs of all learners.
- Parent and community involvement enrich the high school experience.

### How did students perform on assessments?

Students that met or exceeded expectations on statewide assessments

#### English Language Arts

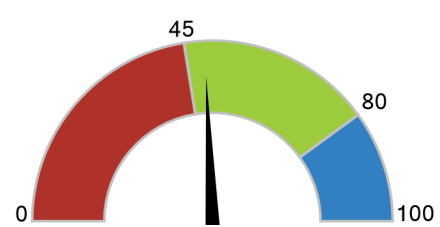
**82.6%**



Below State: 0 - 56.6%  
 Met State: 56.7 - 79.9%  
**Met Goal: 80 - 100%** ✓

#### Math

**48.6%**

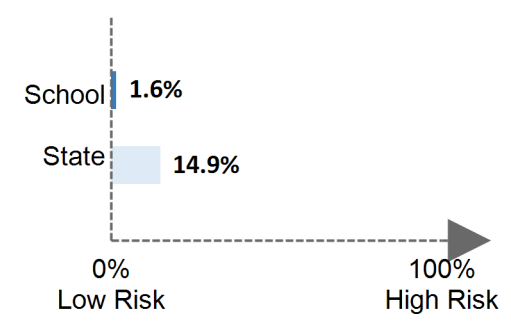


Below State: 0 - 44.9%  
**Met State: 45 - 79.9%** ✓  
 Met Goal: 80 - 100%

### Are students at risk?

Students that were absent for 10% or more of days enrolled

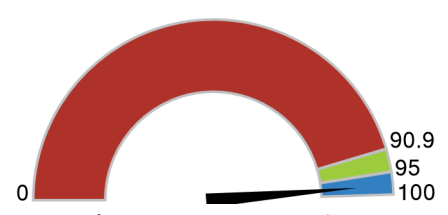
#### Chronic Absenteeism



### Are students graduating?

4-year Graduation Rate

**97.3%**



Below State: 0 - 90.8%  
 Met State: 90.9 - 94.9%  
**Met Goal: 95 - 100%** ✓

### Are students college and career ready?

#### AP/IB Courses:

**54.5%** of 11<sup>th</sup> and 12<sup>th</sup> graders enrolled (State = 34.9%)

#### Dual Enrollment Courses:

**0.0%** of 11<sup>th</sup> and 12<sup>th</sup> graders enrolled (State = 13.3%)

#### Industry-Valued Credentials:

**0.0%** of students earned (State = 0.9%)

#### College Enrollment:

**90.9%** of graduates enrolled (State = 77.9%)

### How to use this report?

- 1 Learn More about this school by viewing the [detailed report](#).
- 2 Start Conversations with school community members and ask questions.
- 3 Engage with your school communities to identify where schools are doing well and where they can improve.